

TOTAL SOLUTION FOR POWER INDUSTRY





*Human Technology
beyond the Future!*



Transformers



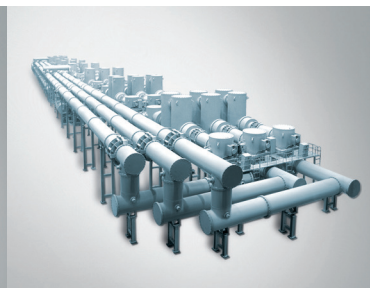
Gas Insulated Switchgear



Switchgear



Power Automation



Dear Sirs,

It is our great pleasure to present this brochure to our esteemed customers and friends all over the world in order to provide a better understanding of our business lines and products.

Equipped with full range of electrical equipment in a single plant, from low voltage to ultra-high voltage, we can offer advanced and comprehensive solutions to our customers, as well as help ensure reliability in power generation and transmission with our quality products and services.

As our goal is to satisfy all of our customers around the world with the most efficient and attractive power solutions, we are continuously investing in R&D for new technology and products, and are operating world-wide overseas offices so that our customers can contact us at any time or send us any inquiry at their convenience.

We hope this brochure will be of assistance in helping you widen your knowledge on our business activities.

Should you need further information or have any inquiries, please feel free to contact us directly or at any of our overseas offices.

We are looking forward to any opportunity to serve you in the near future.

Sincerely yours,



LV/MV Circuit Breakers



Rotating Machinery



INTEGRICT



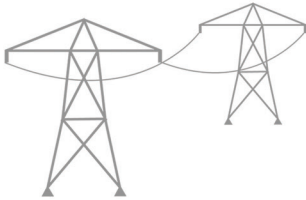
Automation System



Power Plants

Transformers

- High quality transformers up to 800kV, 1,500MVA, utilizing state-of-the-art manufacturing/testing facilities, with stringent quality control system at every step of the manufacturing process
- Meet all customer requirements in compliance with applicable industrial codes & standards
- Optimized design for high performance and reliability
- ISO 9001 quality certified

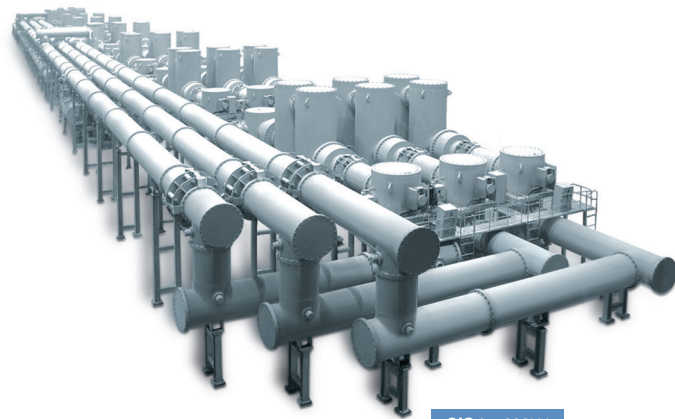


Power Transformer
up to 800kV, 1,500MVA

Primary Substations

Gas Insulated Switchgear

- Require less space than conventional open-air substations
- Provide maximum safety for operating personnel with grounded enclosures and all live parts contained
- Design comprised of standardized modules, resulting in high quality production, simple assembly and easy installation



GIS for 800kV



Automation System

SCADA Systems

- SCADA Systems for a nationwide network
- Multi-OS systems running on UNIX, Windows and Linux environment
- System integration for optimization, demand forecasting and energy management system
- Solutions to meet various customization demands



ECMS System

- IEC61850 supported
- On-Line IED configuration and diagnosis
- Multi IED connectivity

Reliable Partner for

Secondary Substations

Switchgear

- Successfully maintain a competitive edge in quality, price and delivery through continuous research and development
- Offer the best solutions in the field of electric power distribution, protection, measuring, control and communication



Low Voltage Switchgear & Motor Control Center

- H8PU : 660V, 3,000A, 80kA
- H5600 : 660V, 3,000A, 100kA
- HiMCC : 1,000V, 5,000A, 100kA



Metal Clad Switchgear

- up to 38kV
- IEC, ANSI Standard



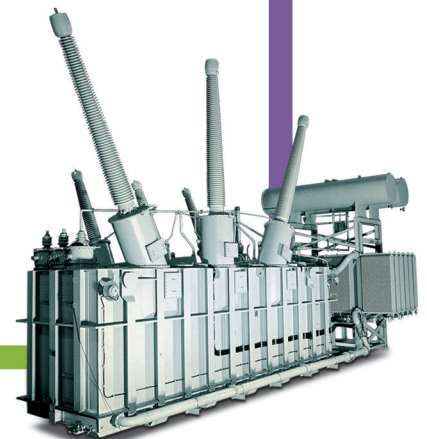
GIS for 245-550kV



Cubicle GIS up to 38kV



HiPDS Hyundai Intelligent Preventive Diagnostic System

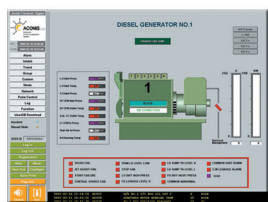


Oil Transformer for Step-down

Mutual Prosperity

Electrical Marine Equipment

- Has been widely acknowledged not only by major classification societies of LRS of UK., ABS of U.S.A, DNV of Norway, GL of Germany, BV of France, NK of Japan, KR of Korea, but also by the leading ship owners around the world.



ACONIS-2000
Advanced Control & Integration System

Bridge Console

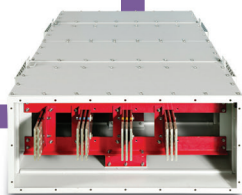
High Voltage Switchboard



Vacuum Circuit Breaker
• IEC 7.2-17.5kV, 25-40kA, 630-4,000A
24/25.8kV, 12.5-25kA, 630-2,000A



Vacuum Contactor
up to 12kV, 400A



Non-segregated Phase Bus Duct
up to 34.5kV, 5,000A



Cast Resin Transformer
up to 36kV, 20MVA

Low & Medium Voltage Circuit Breakers

- Wide range of breaking capacities and frames to meet all customer requirements
- Compact design providing high performance
- Compact and reliable products type-tested by DEKRA and KERI



Contactor & Relay
up to 800A



Miniature Series
up to 125A, 10kA



Molded Case Circuit Breaker
up to 800A, 85kA

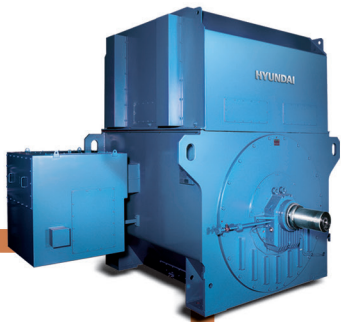


Air Circuit Breaker
• 630-6,300A • 65-150kA

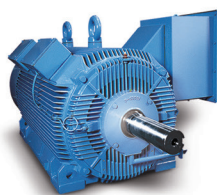
Rotating Machinery

Motors & Generators

- Meet customers' technical requirements with the state-of-the-art manufacturing and testing facilities.
- Comply with international standards such as IEC, IEEE, CSA, NEMA, API, etc.



Medium & High Voltage Induction Motor
 • 150-30,000HP • up to 14kV, 50/60Hz • 2-30pole



H^c Series Motor
 • 150-1,300HP
 • 2,000-7,200V, 50/60Hz
 • 2-8pole



Synchronous Generator
 • 100-50,000kVA
 • 220-22,000V, 50/60Hz
 • over 4pole



Wind Turbine Generator
 • up to 5MW



Low Voltage Speed Generator



Inverter Shield Motor
 • 1-250HP
 • 2-6pole
 • NEMA Premium Efficiency

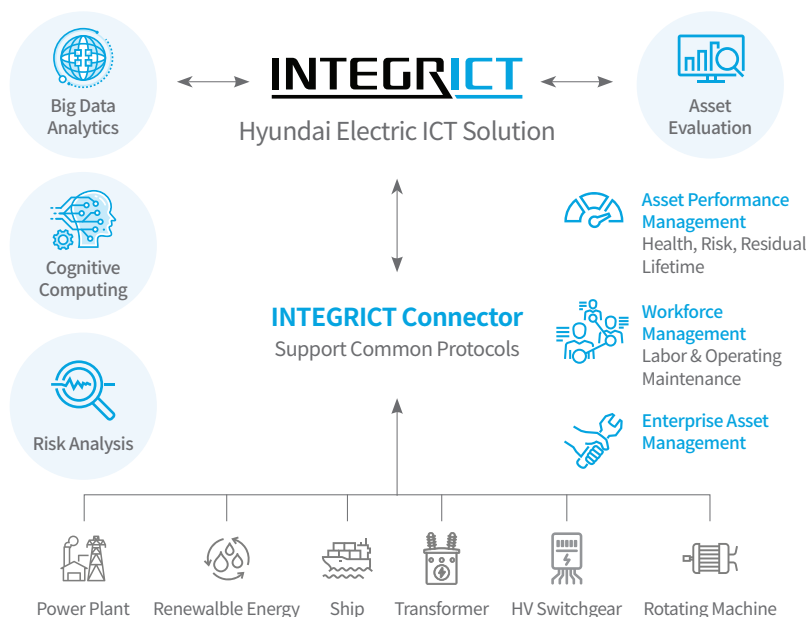
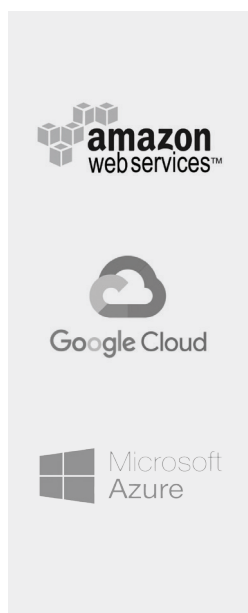


NEMA Premium Efficiency Motor
 • 1-250HP
 • 2-6pole
 • NEMA Premium Efficiency

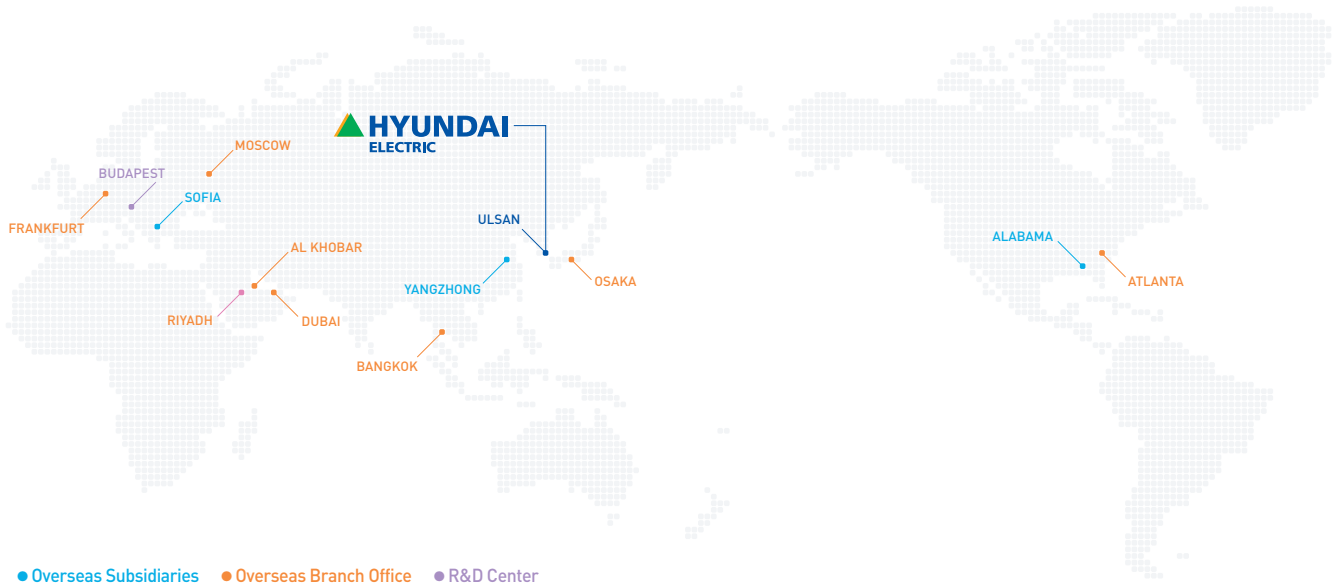


Explosion-Proof (Class 1 Div.1) Motor
 • 1-250HP • 2-6pole
 • Hazardous Locations
 • NEMA Premium Efficiency

H-Cloud Diagram



Global Network



HYUNDAI ULSAN FACTORY



Established Year : 1977
Product : TR, GIS etc.

HYUNDAI TECHNOLOGIES CENTER HUNGARY LTD.



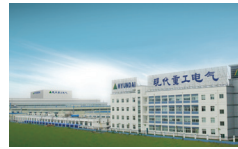
Established Year : 1998
Research Area : Rotating Machinery etc.

HYUNDAI BULGARIA



Established Year : 1997
Product : TR (Tap Changer) etc.

HYUNDAI CHINA



Established Year : 2003
Product : Circuit Breaker and Switchgear etc.

HYUNDAI POWER TRANSFORMERS USA



Established Year : 2010
Product : TR



www.hyundai-electric.com

Bundang Office

(Sales & Marketing)

5F, 55, Bundang-ro, Bundang-gu, Seongnam-si, Gyeonggi-do, Korea

Tel: 82-31-8006-6853, 6786, 6654

Fax: 82-31-8006-6835, 6897, 6898

Ulsan

(Factory)

700 Bangeojinsunhwan-doro, Dong-gu, Ulsan, Korea

Tel: 82-52-202-8114

Fax: 82-52-202-8100