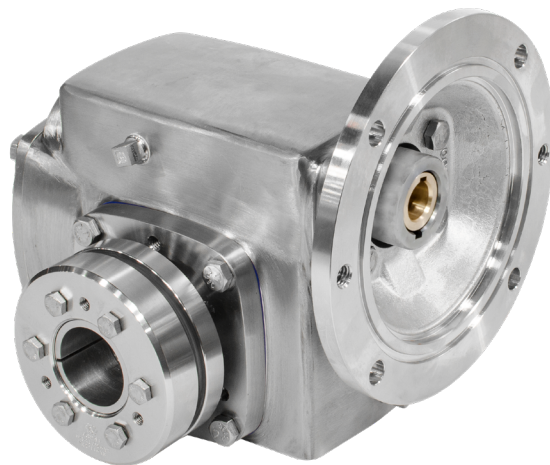




HUBLOC® KEYLESS BUSHING SYSTEM



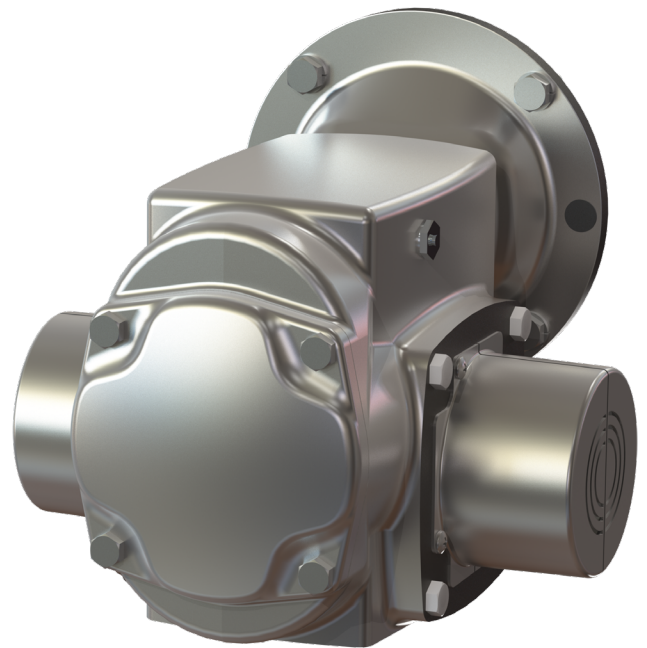
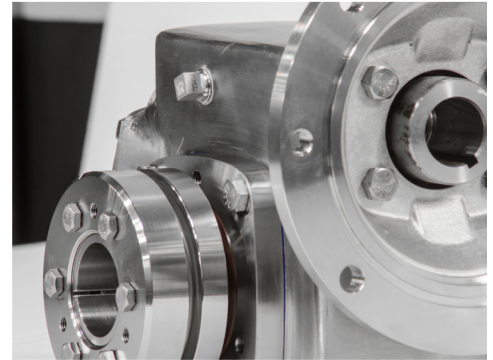
RegalRexnord™

VERSATILE, ROBUST, EASILY INSTALLED, AVAILABLE IN BOTH CARBON STEEL & STAINLESS STEEL

HUBLOC® KEYLESS BUSHING SYSTEM

FEATURING

- The HubLoc system creates a keyless, backlash-free mechanical interference fit that eliminates the micromovement that causes fretting and cold welding.
- Self-centering design achieves optimum concentricity and eliminates oscillation in shaft mounted applications.
- Minimizes customer inventory, as one gearbox can be used for multiple shaft diameters.
- Ambidextrous design allows the shaft to be mounted on either side of the gearbox.
- HubLoc system can be installed easily in a few minutes requiring only standard hand tools.
- Is easily uninstalled using threaded push-off holes.
- Double tapered design allows a wide range of tolerances found on standard shafting.
- Available in both carbon steel and stainless steel.
- Available in a wide range of standard bores.
- Available as an option on HERA® Gear Drive, in both Cast Iron and Stainless Steel.
- Bolt-on split covers are made of stamped 304/304L stainless steel, .050 thickness and feature a removeable knock-out for output shaft protrusion.
- The covers are split so they can be installed after brushing onstallation.





Motion Control Solutions
Regal Rexnord

Customer Service: 800-626-2120

Technical Service: 800-626-2093

CustomerService.PTSolutions@regalrexnord.com

regalrexnord.com

The proper selection and application of products and components, including assuring that the product is safe for its intended use, are the responsibility of the customer. To view our Application Considerations, please visit <https://www.regalrexnord.com/Application-Considerations>.

To view our Standard Terms and Conditions of Sale, please visit <https://www.regalrexnord.com/Terms-and-Conditions-of-Sale> (which may redirect to other website locations based on product family).

"Regal Rexnord" is not indicative of legal entity. Refer to product purchase documentation for the applicable legal entity.

Regal Rexnord, Hera, Hubcap, Hub City and Hubloc are trademarks of Regal Rexnord Corporation or one of its affiliated companies.

© 2016, 2022 Regal Rexnord Corporation, All Rights Reserved. MCB22122E • Form# 10118E

